

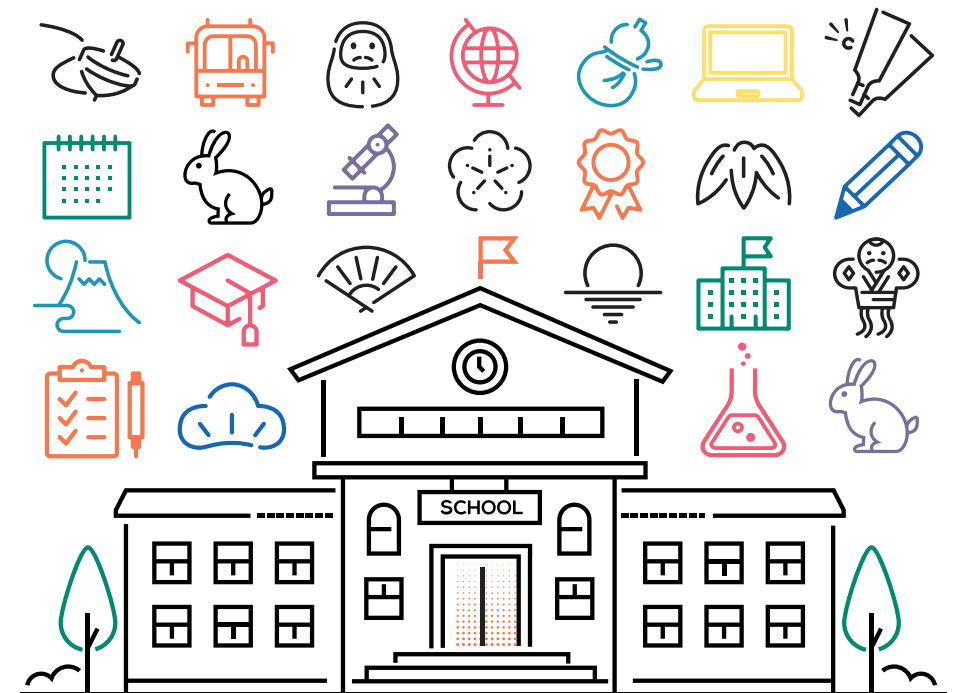
English

2023-2024

STUDY IN JAPAN

////// **Basic Guide** ////

www.studyinjapan.go.jp



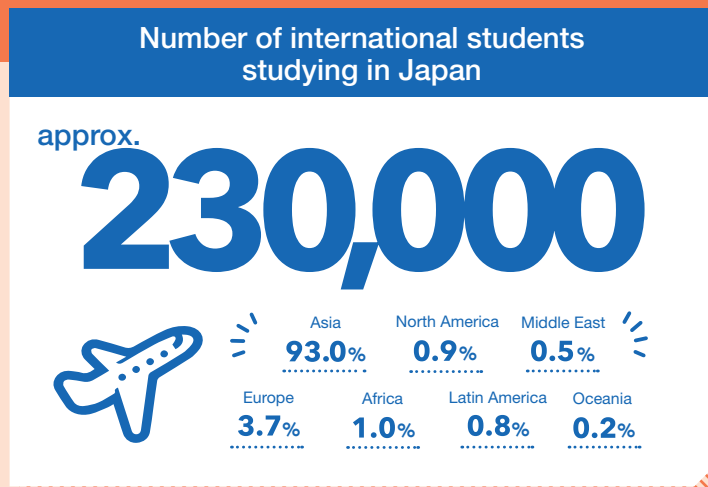
 Independent Administrative Institution
Japan Student Services
Organization

 **STUDY in JAPAN**

ABOUT

What kind of place is Japan? Japan is full of charm and is sure to bring you closer to achieving your dreams.

10 QUICK FACTS ABOUT JAPAN



Why Study in Japan?

Izumo Kagura ©Iku



In Japan, traditional culture, such as sado, kabuki, and budo coexist with pop culture like manga and anime.

Hot springs in winter (Ginzan Onsen, Obanazawa City) ©Koichi_Hayakawa



Japan has many mountains and is surrounded by oceans, so you can enjoy the dramatic changes in the natural scenery through spring, summer, autumn, and winter.

Culture



Yahiko-jinja Shrine Sumo Ring ©Yahikomura

Nature



Mount Fuji and autumn leaves by Lake Kawaguchi ©Koichi_Hayakawa

Safety

Calming time ©yuranii



Food

Sushi



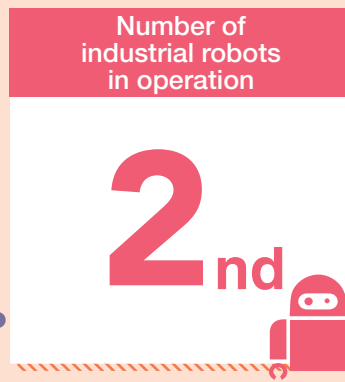
The Shinkansen Bullet Train

Japan's convenient lifestyle and advanced medical services are backed up by one of the highest levels of science and technology in the world. The Japanese Government continues to focus on further growth in the field of science and technology. The supercomputers developed in Japan continue to be among the best in the world.

Washoku, the traditional dietary culture of the Japanese, is designated as an intangible cultural heritage by UNESCO, comprised of ingredients selected based on the season. It is receiving a lot of attention worldwide as healthy and colorful cuisine.

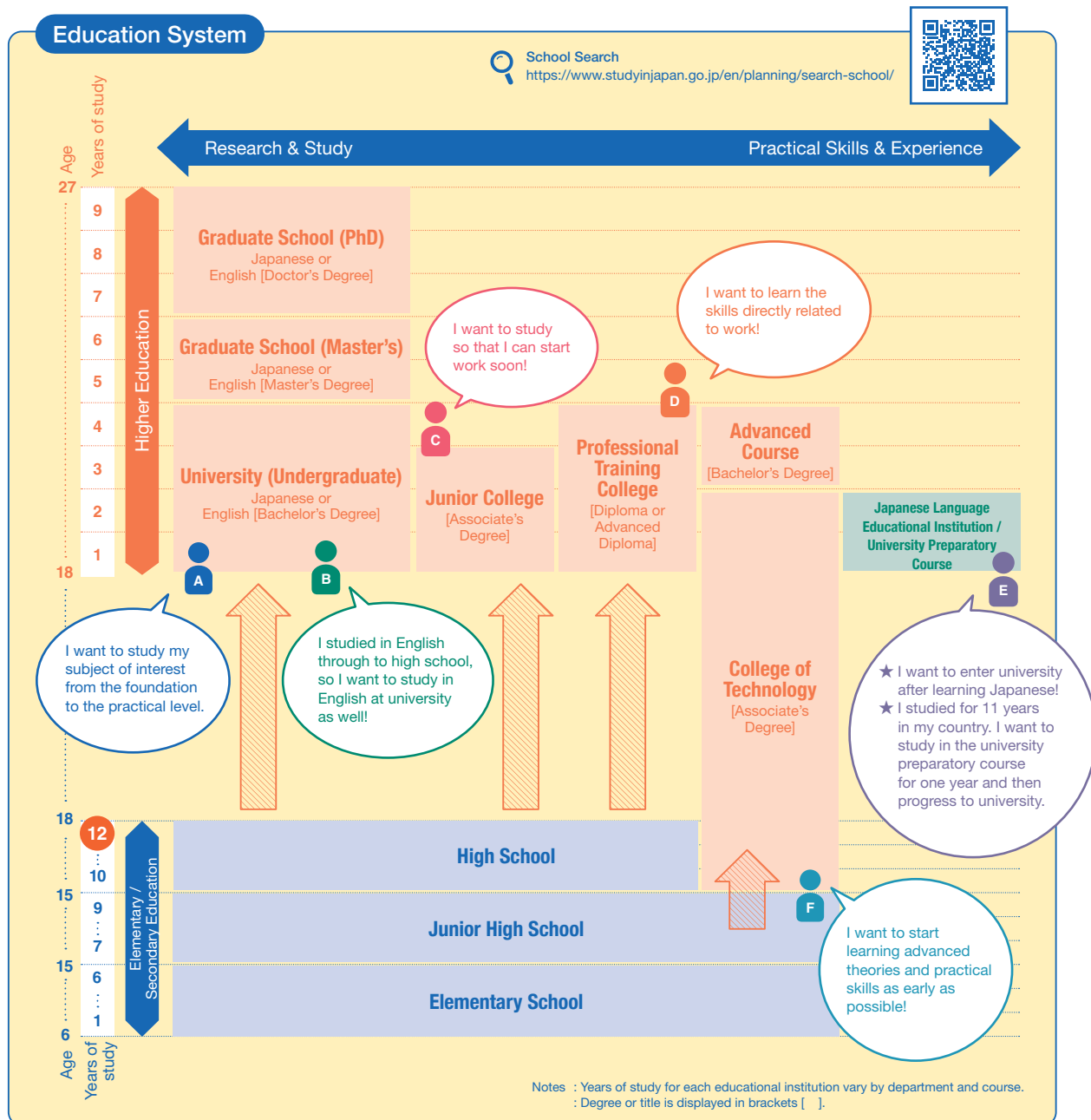


Takoyaki (Fried dumplings with octopus)



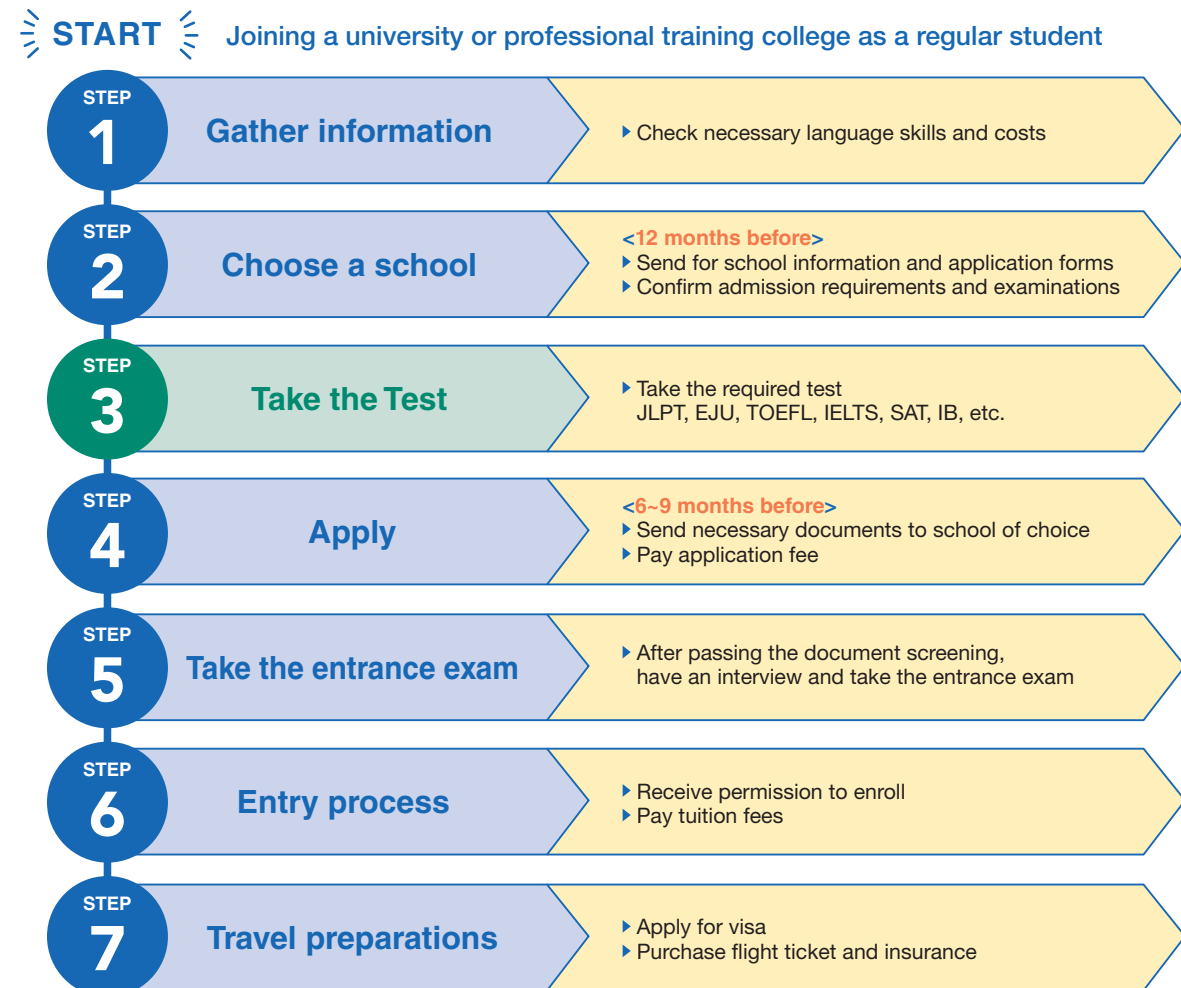
References: • Kids Ministry of Foreign Affairs, Various World Knowledge Ranking (<https://www.mofa.go.jp/mofaj/kids/ranking/index.html>)
 • Condé Nast Traveler (Readers' Choice Awards 2022)
 • Global Peace Index 2022
 • UNESCO World Heritage List (<https://whc.unesco.org/en/list/>)
 • The Summary of Result on an Annual Survey of International Students in Japan 2022 (JASSO)
 • Japan Robot Association(<https://www.jara.jp/data/index.html>)

Higher Education in Japan



- Higher education in Japan begins after completing six years of elementary, three years of junior high, and three years of high school (total 12 years).
- International students wishing to enter Japanese higher education **must complete 12 years of formal education**.
- Those with less than 12 years of formal education must first complete a one or two year university preparatory course before entering higher education.

7 Steps to Study in Japan



GOAL

About the EJU



Examination for Japanese University Admission for International Students (EJU)

A test to determine if students possess the Japanese language skills and basic academic abilities necessary to study at Japanese universities and other such higher educational institutions.

- ★ More than 60% of Japanese universities (90% of national universities) use EJU test results when screening applicants
- ★ Results are valid for two years
- ★ Applicants with excellent EJU results are promised Monbukagakusho Honors Scholarship for Privately-Financed International Students (p.7)
- ★ Test can be taken multiple times

• Schedule

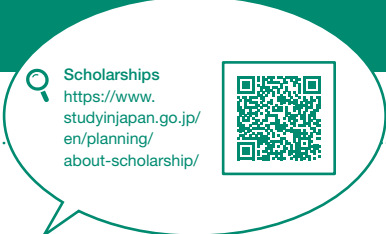
Held twice a year (June and November)

• Location

Held in Japan and 14 countries and regions around the world!

EJU
<https://www.jasso.go.jp/en/ryugaku/eju/index.html>





Tuition & Living Expenses

Tuition Fees

• Approximate tuition fees for one year



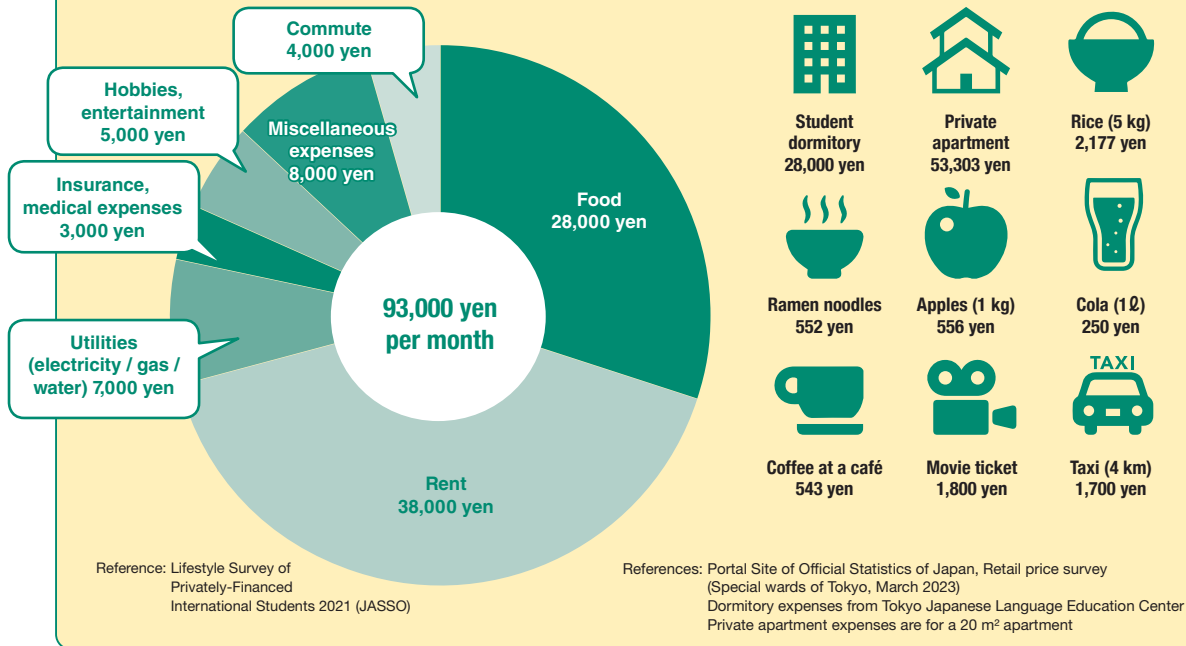
Notes: Excluding medical, dental and pharmaceutical departments. For the first year, additional fees for entry, etc., must be paid separately.

Source: Ministry of Education, Culture, Sports, Science and Technology (MEXT) - Survey on Student Fees and Other Costs for Students Entering Private Universities in 2021 (https://www.mext.go.jp/a_menu/koutou/shinkou/07021403/1412031_00004.htm)

Living Expenses

• Guide for living expenses

Living expenses are more expensive in large cities. Example: 108,000 yen in Tokyo



Reference: Lifestyle Survey of Privately-Financed International Students 2021 (JASSO)

References: Portal Site of Official Statistics of Japan, Retail price survey (Special wards of Tokyo, March 2023)
Dormitory expenses from Tokyo Japanese Language Education Center
Private apartment expenses are for a 20 m² apartment

Working part-time as a student

People with a residency status of "Student" who apply for "Permission to Engage in Activity other than that Permitted by the Status of Residence Previously Granted," may engage in part-time work for up to 28 hours per week.



Be careful of international student agents who emphasize that you can "earn a lot of money as a student in Japan!"



- You can receive 3,000 yen per hour. ❌ The average hourly wage is 1,000 yen.
- As an international student you can earn 300,000 yen a month. ❌ Students working part-time can expect to earn around 59,000 yen per month.

Scholarships & Financial Aid

Method 1 Apply for the scholarships granted by the Japanese Government

* Amounts may vary by level. ** Amount for Japanese language school students

	MEXT Scholarship	Monbukagakusho Honors Scholarship for Privately-Financed International Students	Student Exchange Support Program (Scholarship for Short-term Study in Japan)
Amount of monthly support	From 117,000 yen*	48,000 yen or 30,000 yen**	80,000 yen
Tuition fee exemption	✓		
Free flight ticket	✓		
Free preparatory education	✓		
Payment period	Entire period of international study	One year or six months	While participating in program
Applicable students	Graduate, undergraduate, college of technology, professional training college, Japanese studies, and teacher training students	Graduate, undergraduate, junior college, college of technology, professional training college, and Japanese language students	Graduate, undergraduate, college of technology, and professional training college students studying in Japan for one year or less
Grade-based	✓	✓	✓
Household income-based		✓	✓
Screening process	Document screening, written examination, and interview	Depends on the school	Document screening
Number available	Unpublished	Around 7,000 students	Around 5,000 students



Method 2

Apply to a local government or private foundation for a scholarship

- Apply after joining a school in Japan.
- There may be many specifications for home country, school you will attend, and field of study.
- Available to a few to a few hundred students each year. Search from the site below.

Local government or private foundation scholarships
https://www.studyinjapan.go.jp/en/planning/about-scholarship/



Method 3

Apply for an on-campus scholarship or use a tuition fee exemption / reduction system

For university X

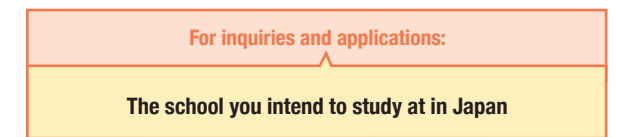
Tuition fee exemption (50% or 100%)

For
Students with excellent grades who would have difficulty in paying fees for financial reasons

For university Y

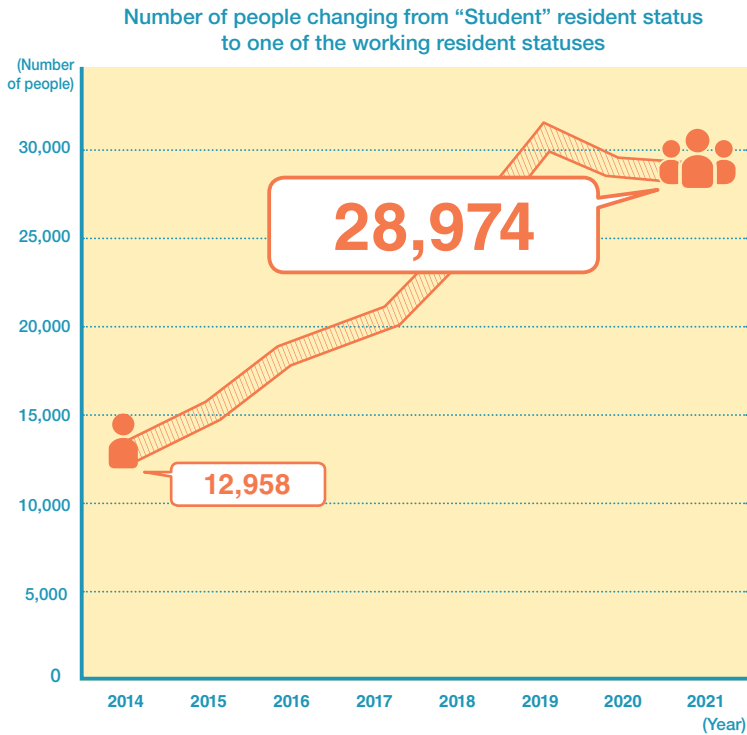
82,000 yen per month scholarship (for four years)

For
Students with excellent entrance examination results



Work in Japan

From international student to employee



Top 10 occupations for international students

Rank	Job description
1	Translation and interpretation
2	Planning (marketing research)
3	International trade
4	Management (non-executive)
5	Information & communications technology
6	Corporate sales
7	Planning (public relations, advertising)
8	Technology development
9	Accounting
10	Care worker

Reference: "Employment status of international students in Japanese companies in 2021" (Immigration Services Agency of Japan)

Looking for work

Job hunting in Japan is quite unique. Therefore, it is essential that international students seeking employment begin preparations well in advance. Use the sites below to begin gathering information.

Job Hunting Guide for International Students (JASSO)
https://www.jasso.go.jp/en/ryugaku/after_study_j/job/guide.html

Open for Professionals (JETRO)
<https://www.jetro.go.jp/en/hrportal/>



Interview



Learn Japanese language and corporate culture to become a must-have employee!

Austin

I came to Japan in 2012 and entered the University of Tokyo to study political science after completing a preparatory course. I now work as a freelance programmer. Although it depends on your chosen major, Japanese university offers a lot of freedom, and you can even take part in a variety of extracurricular activities such as internships. Additionally, thanks to the new graduate hiring system, Japan is the easiest country in which to shape your first career among advanced countries. To succeed in Japan, rather than becoming Japanese, you should make the most of your unique strengths as a foreigner. The language skills learned through studying and working in Japan as well as the understanding of this unique culture are sure to become irreplaceable strength. If you want to become a sought-after employee in this world of advancing globalization, I really recommend studying and working in Japan.

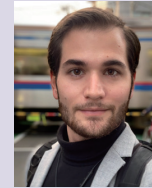
Interview



I want to bring Japan's civil engineering technology to Rwanda!

Rumanzi Hypolite
 NIT (KOSEN), Maizuru College
 (At the time of this interview)

My country faces the problem that, even if we want to improve infrastructure, we lack skilled architects and engineers. That is why I came to study in Japan, known for its high levels of education and engineering, so I can take my skills home and contribute to my country's development. I was worried about living in Japan and had a few troubles, but there was always someone around to help me out and I'm so grateful to them. Now I'm studying civil engineering at a college of technology and plan to advance to university, if possible going on to a master's degree. My dream is to create a construction company back home, and teach the skills and culture I learned in Japan to the younger generation.



I could focus on my studies thanks to the scholarship!

Ioannis Gkolfinopoulos
 Tokyo Institute of Technology, Graduate School of Civil Engineering Master's Course
 (At the time of this interview)

I think being free from financial worries while in Japan is the key to focusing on my research, so I applied for a MEXT scholarship. The amount of support and guidance given to students at Japanese universities is really impressive. On the other hand, the crush of the rush-hour commute is quite surprising! Japan is a unique country where tradition and technology coexist. I think westerners are likely to experience a lot of culture shock coming here, so learning about the language and culture is very important. The MEXT scholarship guarantees a smooth life as a student, so why not give it a try yourself.

Japanese University Life



Enjoy a fulfilling life as an international student in Japan!

KIAULAKITE PAULINA
 Department of Psychology, Faculty of Human Life and Environmental Sciences
 (At the time of this interview)

I was inspired to become an international student in Japan during my first visit to the country as a middle school student. I was fascinated by the culture and size of Tokyo, and felt that I would enjoy studying here. I joined the Department of Psychology, Faculty of Human Life and Environmental Sciences, Ochanomizu University, after passing the MEXT Scholarship and studying Japanese for one year at the Tokyo University of Foreign Studies. Ochanomizu University is a relatively small national university, so foreign students are not treated differently from Japanese students in the classroom. There is also no difference in the curriculum and class content when compared to that of other Japanese university students studying psychology. While this can make some tasks and tests seem difficult, it also means that there is much to learn. I also feel that my life as a student is quite fulfilling, and I often enjoy going out with the Japanese friends I have made.



↑ Self study language cafe held during the lunch break. We all get along very well.
 ← A photo taken at a tourist site in Kyobashi. I'm surrounded by Japanese culture!

A typical day

● 8:00 - Wake up

I wash my face and eat breakfast.

● 10:00 - Go to school

My commute is short because I live close to the university!

● 10:30 to 12:10 - Morning classes

I attend classes with friends.

● 12:10 to 13:20 - Lunch

I eat lunch at the cafeteria with friends, and then study in the library or chat in the classroom.

● 13:20 to 16:30 - Afternoon classes

I carefully listen to the instructor and take notes.

● 16:30 to 18:30 - Time with friends

I often spend time with my Japanese friends after school. We often go to Ikebukuro because it is close to the university, and we eat dinner or go to karaoke together.

Study in Japan Website

The Study in Japan website provides the information you need to study in Japan, including how to prepare, life as a student in Japan, and scholarship information. You can also search for a school that meets your needs according to your major of choice, language used in classes, and school location.

In addition to those who wish to study in Japan or wish to find a school to attend, we also recommend this website for those still not sure whether they wish to study abroad, or are still choosing which country to study in.



Study in Japan Website
<https://www.studyinjapan.go.jp/en/>



Study in Japan Fairs

These are valuable opportunities where you can speak directly with school representatives.

The Study in Japan Fair is held online and in-person every year. For more information, visit the Study in Japan website.

Study in Japan
<https://www.studyinjapan.go.jp/en/other/event/>



Q. I have attended a Japanese school. Can I apply to the international student entrance exam?

A. Whether you can take the international student entrance exam or not is decided by the school. Those who have graduated from a Japanese high school, and those who hold both Japanese and another nationality should inquire about the entrance exam before applying to the school.

Q. Please tell me about the process of entering graduate school.



A. Check the entry requirements, create a research proposal, and confirm what documents need to be submitted. Generally, you must find an instructor yourself. Some institutions require you to have informal acceptance before application, so confirm this with your chosen institution as soon as possible.

Q. How should I look for and confirm the application period, necessary documents, and entrance examination?



A. Details of the application process and entrance examination can be found on the school's website or admission guidelines. Once you have decided on a school, check their website or admission guidelines.

Q. Please tell me about the high school international exchange program and scholarship.

A. The groups below offer support for high school international exchange.

• **AFS Intercultural Programs**
 URL: <https://afs.org>

Note: Use the "Find AFS in your Country" function to inquire at your local office.

• **YOUTH FOR UNDERSTANDING**
 URL: <http://yfu.or.jp>

We truly believe that everyone can find something worthwhile by studying in Japan.

Japan Student Services Organization (JASSO) provides the following support programs for international students

- Scholarship provision
- Running Examination for Japanese University Admission for International Students (EJU)
- Collection and provision of information on studying abroad
- Japanese language education
- Housing support

[Edited and published by]

Independent Administrative Institution, Japan Student Services Organization (JASSO) Information Services Division, Student Exchange Department
 2-2-1 Aomi, Koto-ku, Tokyo 135-8630
 E-mail : infoja@jasso.go.jp
 Tel : (+81) 3-5520-6111
 Web : <https://www.studyinjapan.go.jp/ja/>



JASSO International Offices

At each of the five JASSO international offices, you can consult with us in person or by telephone or email. We also have various reference materials regarding studying in Japan.



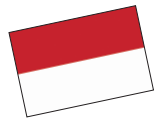
Thailand

1016/3, 10F Serm-mit Tower, 159 Asok-Montri Rd., Bangkok 10110 THAILAND
 Tel : (+66) 2-661-7057
 E-mail : info@jeic-bangkok.org
 Web : <https://www.jeic-bangkok.org/>
 Facebook : <https://www.facebook.com/JASSO.Thailand>



Korea

#702 Garden Tower, 84 Yulgok-ro, Jongno-gu, Seoul 03131 REPUBLIC OF KOREA
 Tel : (+82) 2-765-0141
 E-mail : jasso@jasso.or.kr
 Web : <http://www.jasso.or.kr/>
 Facebook : <https://www.facebook.com/JASSO.Korea>
 Instagram : <https://www.instagram.com/jasso.korea/>



Indonesia

Jakarta Summitas Tower II, 2nd Floor Jalan Jenderal Sudirman Kav. 61-62, Jakarta 12190 INDONESIA
 Tel : (+62) 21-252-1912
 E-mail : info@jasso.or.id
 Web : <http://www.jasso.or.id/>
 Facebook : <https://www.facebook.com/jasso.indonesia>
 Instagram : <https://www.instagram.com/jasso.indonesia/>
 WhatsApp : <https://api.whatsapp.com/send?phone=62212521912>



Vietnam

4th Floor, CornerStone Building, 16 Phan Chu Trinh, Hoan Kiem, Hanoi, VIETNAM
 Tel : (+84) 24-3710-0226
 E-mail : info@jasso.org.vn
 Web : <http://www.jasso.org.vn/>
 Facebook : <https://www.facebook.com/JASSO.Vietnam>



Malaysia

A-7-5, Northpoint Offices, Mid Valley City, No.1, Medan Syed Putra Utara, 59200 Kuala Lumpur, MALAYSIA
 Tel : (+60) 3-2287-0812
 E-mail : enquiry@studyinjapan.org.my
 Web : <http://www.studyinjapan.org.my/>
 Facebook : <https://www.facebook.com/JASSO.Malaysia>