

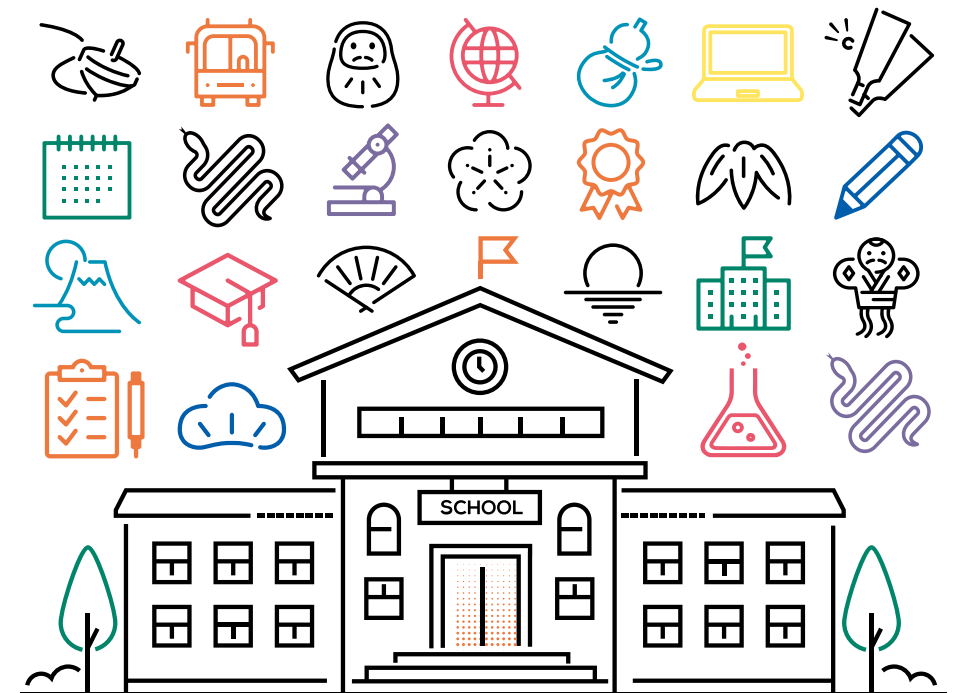
www.studyinjapan.go.jp

English

2025-2026

STUDY IN JAPAN

////// **Basic Guide** ////



10 QUICK FACTS ABOUT JAPAN

Basic Information about Japan

Total area Approx. **378,000** km²

Population Approx. **124,352,000**

Capital **Tokyo** Currency **Yen (¥)**

Japanese Nobel Prize winners

30



Financial contribution to the UN

3rd



Gross Domestic Product (GDP)

3rd



Number of Japanese universities ranked in the top 1,000 of the QS World University Rankings 2025

28



Number of industrial robots in operation

2nd



World Cultural and Natural Heritage sites

26



Global Peace Index (within Asia)

3rd



Number of Japanese cities ranked in the Top 10 Best Big City in the World

1
(Tokyo)



Number of exported automobiles

1st



References: • Kids Ministry of Foreign Affairs, Various World Knowledge Ranking (<https://www.mofa.go.jp/mofaj/kids/ranking/index.html>) • Condé Nast Traveler (Readers' Choice Awards 2024) • Global Peace Index 2024 • UNESCO World Heritage List (<https://whc.unesco.org/en/list/>) • Japan Robot Association (<https://www.jara.jp/data/index.html>) • Statistics Bureau of Japan • The Nobel Foundation • Ministry of Foreign Affairs of Japan, Major Economic Indicators • Japan Automobile Manufacturers Association, Inc. (<https://www.jama.or.jp/statistics/>)



ABOUT

What kind of place is Japan? Japan is full of charm and is sure to bring you closer to achieving your dreams.

Why Study in Japan?

Izumo Kagura ©Iku



In Japan, traditional culture, such as sado, kabuki, and budo coexist with pop culture like manga and anime.

Hot springs in winter (Ginzan Onsen, Obanazawa City) ©Koichi_Hayakawa



Japan has many mountains and is surrounded by oceans, so you can enjoy the dramatic changes in the natural scenery through spring, summer, autumn, and winter.

Culture



Yahiko-jinja Shrine Sumo Ring ©Yahikomura

Nature



Mount Fuji and autumn leaves by Lake Kawaguchi ©Koichi_Hayakawa

Safety

Calming time ©yuranii



Food

Sushi



The Shinkansen Bullet Train

Japan's convenient lifestyle and advanced medical services are backed up by one of the highest levels of science and technology in the world. The Japanese Government continues to focus on further growth in the field of science and technology. The supercomputers developed in Japan continue to be among the best in the world.

Washoku, the traditional dietary culture of the Japanese, is designated as an intangible cultural heritage by UNESCO, comprised of ingredients selected based on the season. It is receiving a lot of attention worldwide as a healthy and colorful cuisine.



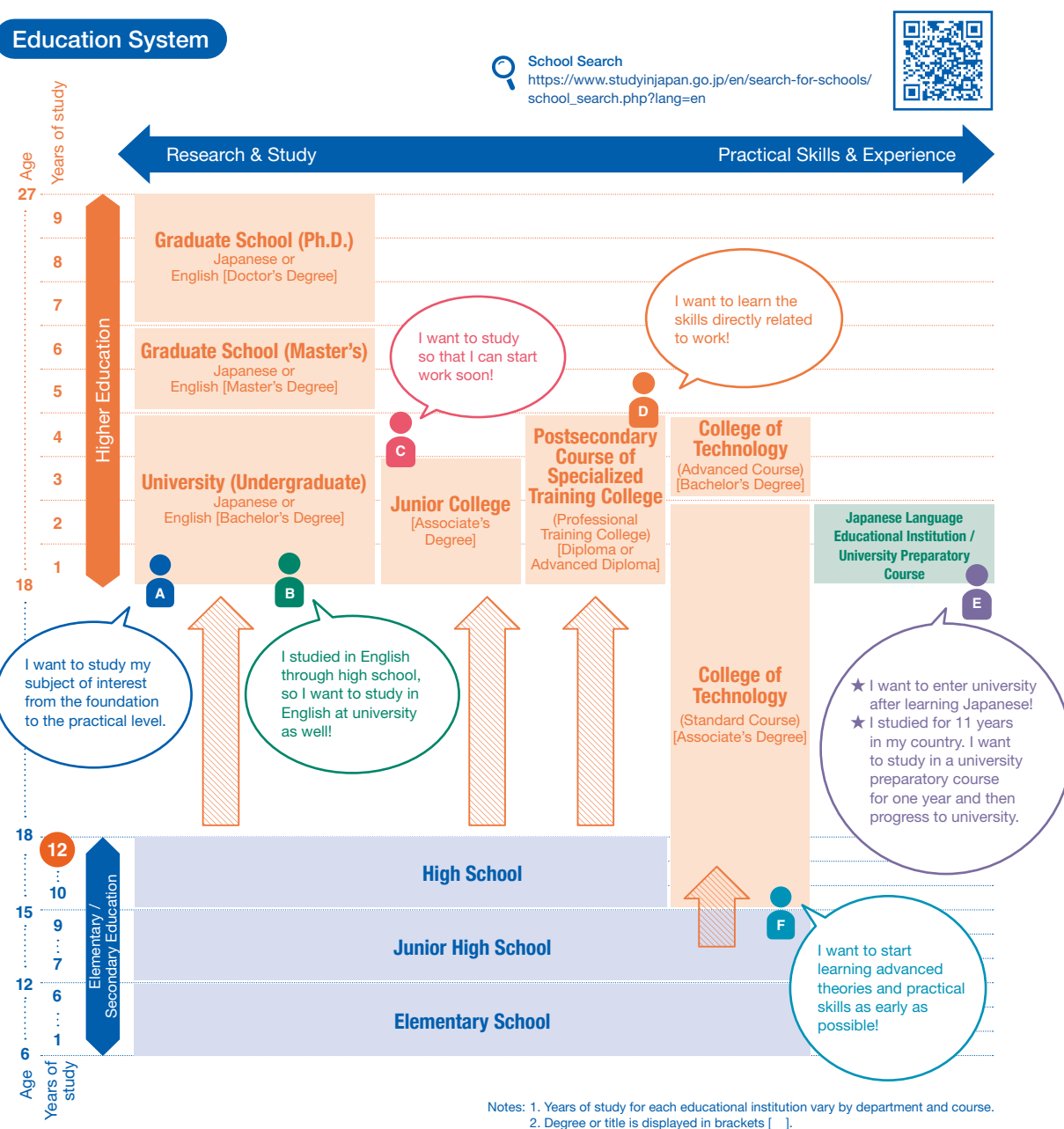
Takoyaki (Octopus balls)

All photos are published with consent under a Creative Commons license (Attribution 4.0 International) <https://creativecommons.org/licenses/by/4.0/>



Higher Education in Japan

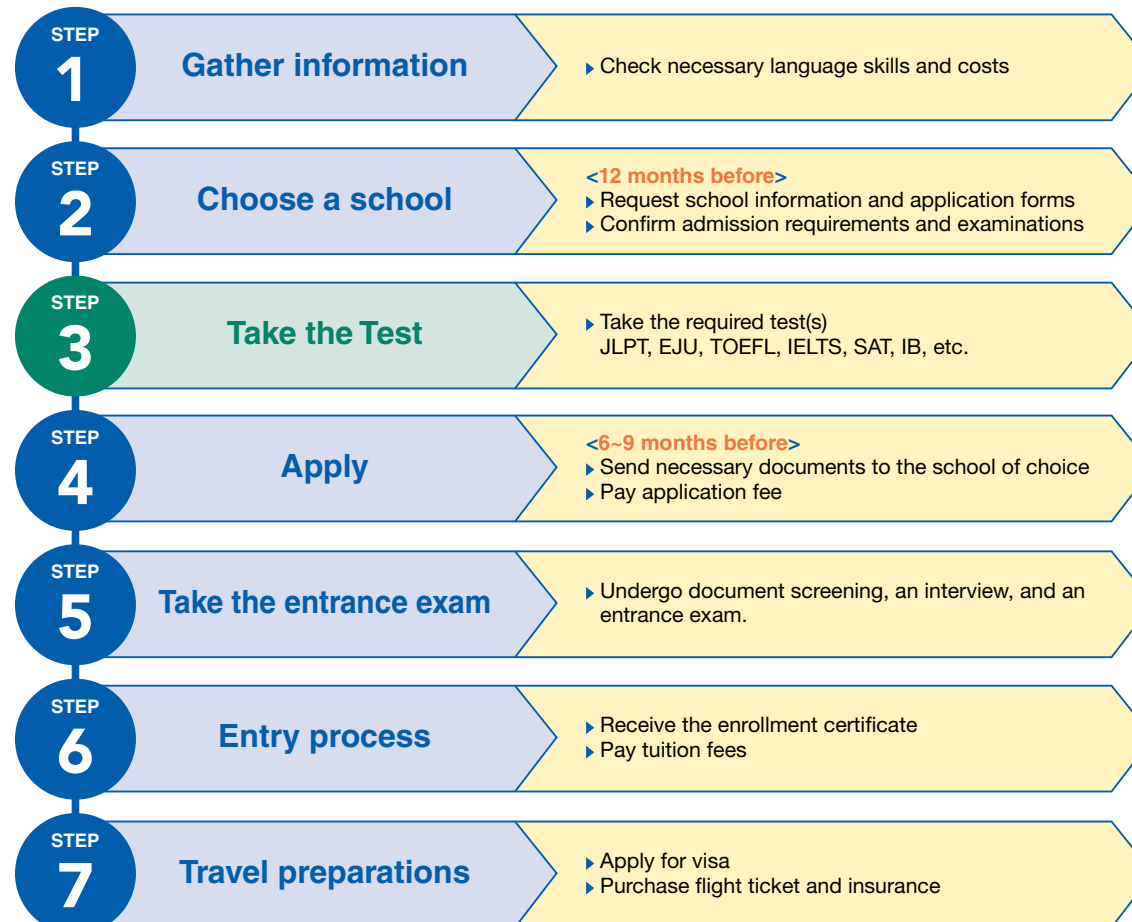
Education System



- Higher education in Japan begins after completing six years of elementary, three years of junior high, and three years of high school (total 12 years).
- International students wishing to enter a Japanese higher education institution **must complete 12 years of formal education**.
- Those with less than 12 years of formal education must first complete a university preparatory course lasting one to two years before entering a higher education institution.

7 Steps to Study in Japan

START Joining a university or professional training college as a regular student



GOAL

University Preparatory Courses

What are university preparatory courses?

To advance to a university or other institute of higher education in Japan, applicants must first complete 12 years of standard school education. **If the standard school system in your home country (up to completion of secondary school) is less than 12 years**, you can complete any university preparatory course approved by the Ministry of Education, Culture, Sports, Science and Technology (MEXT) to become eligible for university admission. In these preparatory courses, students study the Japanese language as well as basic subjects necessary for university admission. The MEXT website lists Japanese-language education institutions that offer these preparatory courses.

List of MEXT-approved university preparatory courses
<https://www.mext.go.jp/en/policy/education/highered/title02/detail02/sdetail02/1395421.html>



Preparation for Entering a Japanese University

Examination for Japanese University Admission for International Students (EJU)



Examination for Japanese University Admission for International Students (EJU)

The Examination for Japanese University Admission for International Students (EJU) is designed to assess the Japanese-language proficiency and basic academic abilities (science, general subjects, and mathematics) of international students seeking to enroll at the undergraduate level at universities and other such higher educational institutions in Japan. There are no eligibility requirements or age restrictions. Exam scores are valid for two years.

Approximately 500 universities—representing more than 60 percent of Japanese universities, and almost all national universities—use EJU scores in their admissions selection process. Taking EJU has other benefits as well. For example, some schools have introduced a pre-arrival admission system that uses EJU scores. Those with excellent EJU scores may also be chosen for the Monbukagakusho Honors Scholarship for Privately-Financed International Students (Reservation Program).

Note: Some schools only accept EJU results from a specified academic year and/or month, so please check the application guidelines of your school of choice to find out about their EJU requirements.



EJU
<https://www.jasso.go.jp/en/ryugaku/eju/index.html>



● Exam sessions

Offered twice a year

		First	Second
1	Applications	February to March	July
2	Receive exam ticket	May	October
3	Exam date	June	November
4	Score announcement	July	December

● Exam venues

Japan: 17 cities
Outside Japan: 17 cities in 13 countries and regions

Overseas venues

India (New Delhi), Indonesia (Jakarta, Surabaya), South Korea (Seoul, Busan), Sri Lanka (Colombo), Singapore, Thailand (Bangkok, Chiang Mai), Taiwan (Taipei), the Philippines (Manila), Vietnam (Hanoi, Ho Chi Minh City), Hong Kong, Malaysia (Kuala Lumpur), Myanmar (Yangon), Mongolia (Ulaanbaatar)

● Subjects to take

Students will take the subjects specified by the university they are applying to (one to three subjects) in the language specified by the university.

Subjects	Purpose	Time (minutes)	Score range	Subject selection	Exam language
Japanese as a Foreign Language	To assess Japanese-language proficiency (academic Japanese) required for studying at Japanese universities and other institutions.	125	Reading Comprehension, Listening and Listening-Reading Comprehension: 0-400 Writing: 0-50		Japanese only
Basic academic skills	Science	80	0-200	Choose two from physics, chemistry, and biology	Choose either Japanese or English
	Japan and the World	80	0-200		
	Mathematics	80	0-200	Course 1 (for those who plan to enter liberal arts programs or science programs requiring comparatively less knowledge of mathematics) Course 2 (for those who plan to enter programs requiring an advanced knowledge of mathematics)	

Note: "Japan and the World" is a subject unique to EJU, and combines three Japanese upper secondary school subjects: civics (politics, economics, etc.), geography, and history.

Where to Learn the Japanese Language

There are three main types of institutions that teach Japanese to non-native speakers.

Japanese-language schools

These are schools established by educational institutions, corporations, etc. In addition to basic Japanese-language studies, they offer a variety of courses, including ones to prepare students for higher education and business Japanese courses. The length of study also varies widely, from a few weeks to a maximum of two years.

Preparatory courses offered at private universities and junior colleges

Among the special courses established to provide special skills education offered by universities, those primarily designed to educate international students are generally referred to as preparatory courses for international students.

There are various types of preparatory courses for international students, such as those focused on nursing care, international studies, and the Japanese language. The course content varies depending on the school, but most preparatory courses provide education on the Japanese language, basic academic subjects, and Japanese culture necessary for advancing to universities or other institutions. The length of study is from one to two years.

Japanese-language courses at specialized training colleges

These courses are established in specialized training colleges approved by prefectural governors. In addition to basic Japanese-language studies, they offer courses to prepare students for higher education. The length of study is from one to two years.

● Useful websites for researching Japanese-language educational institutions

Japanese-Language Education Institution Accreditation Act Portal (MEXT)
<https://www.nihongokyouiku.mext.go.jp/top>



Association for the Promotion of Japanese Language Education
https://www.nisshinkyoo.org/search/index_e.html



List of schools designated by the Ministry of Justice (MoJ)
https://www.moj.go.jp/isa/applications/resources/nyuukokukanri07_00217.html?hl=en



Japanese-Language School Association (JaLSA)
<https://jalsa.tokyo>



Tuition & Living Expenses

Tuition Fees

Average annual tuition for universities

	National universities	Public universities	Private universities
Undergraduate	535,800 yen	536,191 yen	1,124,476 yen
Graduate schools	Master's program	535,800 yen	536,789 yen
	Doctoral program	535,800 yen	536,789 yen
	Professional degree programs	535,800 yen	536,789 yen

Note: Private university tuition includes facility maintenance fees and other costs.

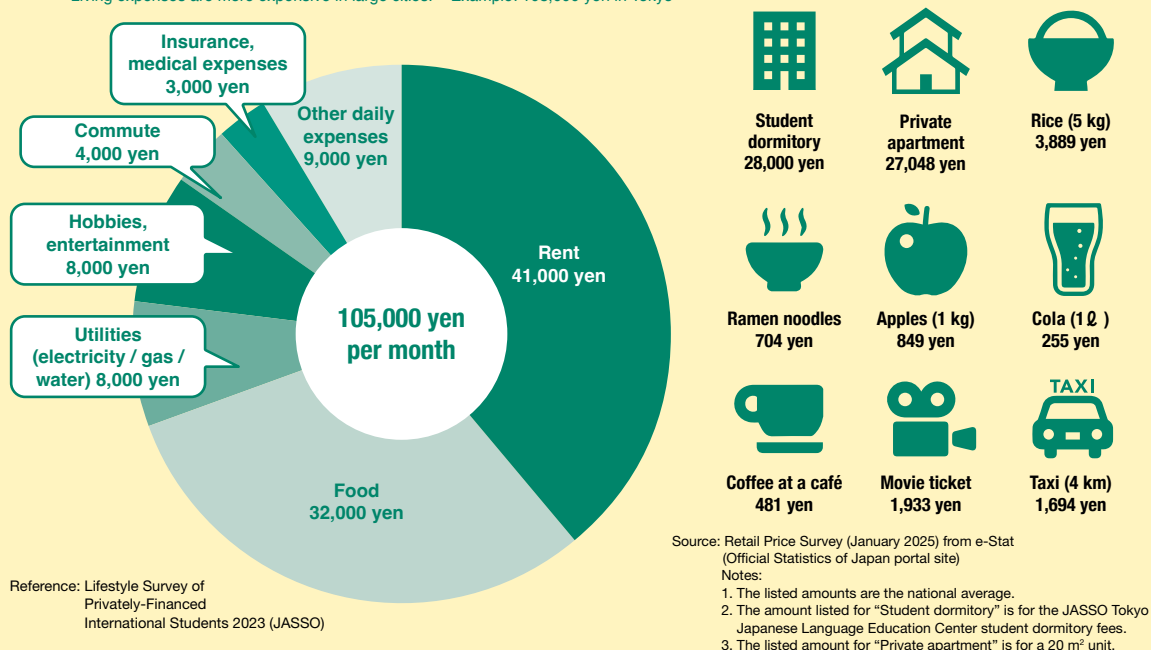
References:

- Survey on Student Fees and Other Costs for Students Entering Private Universities in 2023 (https://www.mext.go.jp/a_menu/koutou/shinkou/07021403/1412031_00005.htm)
- Student Fees Survey 2023 (Public Universities) (https://www.mext.go.jp/a_menu/koutou/kouritsu/detail/20240328-ope_dev03-1.pdf)

Living Expenses

Guide for living expenses

Living expenses are more expensive in large cities. Example: 108,000 yen in Tokyo



Scholarships & Financial Aid

Scholarships
<https://www.studyinJapan.go.jp/en/planning/scholarships/>



Method 1 Apply for the scholarships granted by the Japanese Government

* The amount varies by type of scholarship. ** Amount for Japanese language school students

	MEXT Scholarship	Monbukagakusho Honors Scholarship for Privately-Financed International Students	Student Exchange Support Program (Scholarship for Short-term Study in Japan)
Amount of monthly support	From 117,000 yen*	48,000 yen or 30,000 yen**	80,000 yen
Tuition fee exemption	✓		
Free flight ticket	✓		
Free preparatory education	✓		
Payment period	Entire period of study	One year or six months	Entire period of exchange program
Applicable students	Graduate, undergraduate, college of technology, professional training college, Japanese studies, and teacher training students	Graduate, undergraduate, junior college, college of technology, professional training college, and Japanese language students	Graduate, undergraduate, college of technology, and professional training college students studying in Japan for one year or less
Grade-based	✓	✓	✓
Household income-based		✓	✓
Screening process	Document screening, written examination, and interview	Depends on the school	Document screening
Number available	Undisclosed	Around 7,000 students	Around 5,000 students

For inquiries and applications:

The Japanese embassy or consulate in your country or the school you currently attend

The school in Japan you intend to study at

The school you currently attend

Method 2

Apply to a local government or private foundation for a scholarship

- Apply after joining a school in Japan.
- There may be many specifications for home country, school you will attend, and field of study.
- This is available to up to a few hundred students each year. Search from the site below.

Local government or private foundation scholarships
<https://www.studyinJapan.go.jp/en/planning/scholarships/other-scholarships/>



For inquiries and applications:

The school in Japan you intend to study at or the relevant group

Method 3

Apply for an on-campus scholarship or use a tuition fee exemption / reduction system

For university X

Tuition fee exemption (50% or 100%)

Eligibility

Students with excellent grades who would have difficulty in paying fees for financial reasons

For university Y

82,000 yen per month scholarship (for four years)

Eligibility

Students with excellent entrance examination results

For inquiries and applications:

The school in Japan you intend to study at

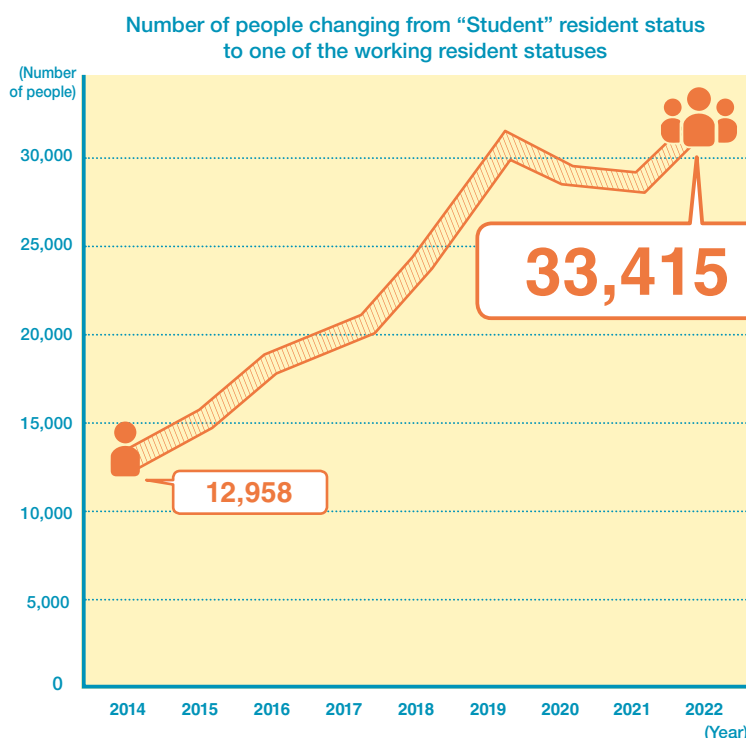


WORK

Companies wanting the best and brightest people regardless of nationality are on the rise, and there is an increase in hiring of international students. Come and work in Japan in the future!

Work in Japan

From international student to employee



Top 10 occupations for international students

Rank	Job description
1	Translation and interpretation
2	Information & communications technology
3	Planning (marketing research)
4	Management (non-executive)
5	International trade
6	Corporate sales
7	Planning (public relations, advertising)
8	Care worker
8	Accounting
10	Production management

Reference: "Employment status of international students in Japanese companies in 2022" (Immigration Services Agency of Japan)

Looking for work

Job hunting in Japan is quite unique. Therefore, it is essential that international students seeking employment begin preparations well in advance. Use the sites below to begin gathering information.

Job Hunting Guide for International Students (JASSO)
https://www.jasso.go.jp/en/ryugaku/after_study_j/job/guide.html

Open for Professionals (JETRO)
<https://www.jetro.go.jp/en/hrportal/>



Interview



Learn Japanese language and corporate culture to become a must-have employee!

Austin

I came to Japan in 2012 and entered the University of Tokyo to study political science after completing a preparatory course. I now work as a freelance programmer. Although it depends on your chosen major, Japanese university offers a lot of freedom, and you can even take part in a variety of extracurricular activities such as internships. Additionally, thanks to the new graduate hiring system, Japan is the easiest country in which to shape your first career among advanced countries. To succeed in Japan, rather than becoming Japanese, you should make the most of your unique strengths as a foreigner. The language skills learned through studying and working in Japan as well as the understanding of this unique culture are sure to become irreplaceable strength. If you want to become a sought-after employee in this world of advancing globalization, I really recommend studying and working in Japan.



STORIES

Why I Choose to Study in Japan



I am studying in a wonderful environment.

Htet Su
Kobe Institute of Computing

I became a fan of Japanese anime, which led to my interest in anime production. I decided to study in Japan to learn the necessary skills. I'm currently studying 3DCG animation at the Kobe Institute of Computing, which has been a very rewarding experience so far. Initially, I was concerned about many things, such as making friends, because I would be taking classes with Japanese students, unlike at Japanese-language schools. However, I have made many Japanese friends, and we complete projects together, go out, and participate in school festivals, making my campus life very fulfilling. I want to add that the teachers have never treated me differently because I'm an international student. Instead, they recognize my efforts and provide me with various opportunities, for which I am truly grateful. Looking back at my experience so far, I'm filled with renewed joy and amazement at having been blessed with such a wonderful educational environment, supportive teachers, and wonderful friends.



I want to share the appeal of the region that I discovered during my time in Japan.

Lee
School of Life Science, Faculty of Medicine, Tottori University

I came to Japan to pursue my dream as a researcher. I've had a pretty unusual experience as an international student in Japan, since my destination was Tottori Prefecture, a rural part of Japan with the lowest population in the entire country. The first year was a struggle. I had to deal with cultural shock because Tottori was so different from my expectation of Japan, and I struggled to make friends here. However, I started realizing that I should learn to embrace my experience here, since everything is a bonus for me! Now I'm on a scholarship from the Rotary Yoneyama Memorial Foundation, and I've made a lot of new friends with the locals. I'm utilizing my multilingual ability and working closely with the prefecture and the local communities to both help other foreigners here and to promote the beauty of Tottori outside Japan.

Campus Life



Enjoying a cross-cultural environment with an insightful perspective focused on my country's future.

Asrael
School of Engineering (Fall 2024 exchange student)
University of Fukui

My world paused for a second after I received my acceptance letter. I'd always been fascinated by the Japanese education system as well as the beauty of nature and seasons of Japan, so I'd always dreamt of coming and studying here. Upon my arrival in Fukui, I was welcomed not just by dinosaurs but also by culture shock. Fukui is way quieter than my hometown, and being surrounded by people speaking a language different from what I grew up with was a challenge. I overcame that, however, by building meaningful relationships with my newfound international and Japanese friends, who helped me not only with the language but also in life. At the university, I took Traditional Industries classes, where I was exposed to various artisanal Japanese crafts: *washi* handmade paper, *habutae* textile, and Echizen soba. Through this, I realized that the best way to experience "real Japan" is by going out and exploring as if it's the last chance. Japan also has a lot I wish we could have in my country—like pedestrian- and bicycle-friendly roads—so apart from bringing home unforgettable stories with me, I look forward to returning to the Philippines with an insightful perspective geared toward my country's future.

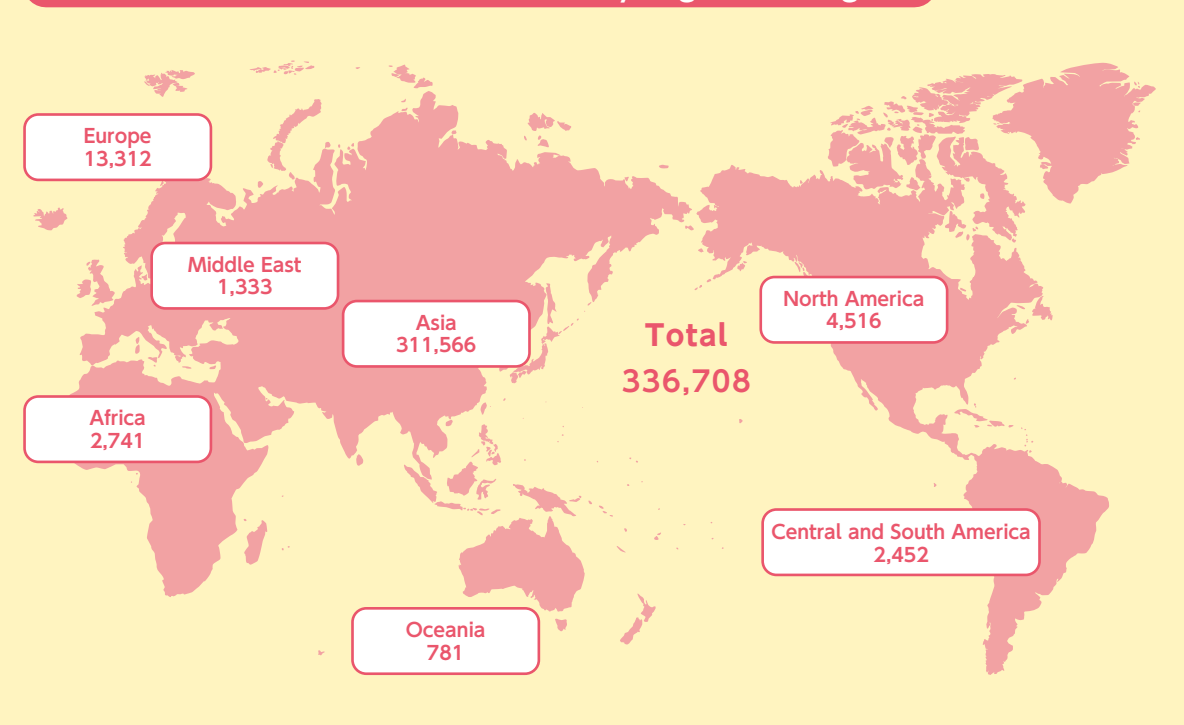
A typical day

- 8:45 Attend Japanese class**
The university is about a fifteen-minute walk from my dormitory, but when I wake up a bit late I can bike to my first class in five minutes!
- Noon Lunchtime with friends**
By the time my Japanese class ends, my stomach's rumbling. Luckily, the university cafeteria offers cheap meals, so I often find myself having lunch there while chatting with my Japanese and international friends.
- 16:15 Classes end, bike around Fukui City**
After class, I often find myself biking around and discovering new things in the city, especially during autumn. When snow starts falling on Fukui, however, I mostly walk from campus to my dormitory.
- 18:30 Cook dinner or eat out**
During my first few weeks in Japan, I usually ate out at ramen shops or at an affordable cafeteria. I eventually learned how to cook easy and simple meals, and saved so much money.
- 20:00 Prepare for my next class, practice writing Chinese characters (kanji)**
We have homework every day in my integrated Japanese classes. It sounds like a lot, but I think it is a very effective way of remembering Japanese. I also took a *kanji* class, so I needed to practice ten new characters every week.
- 22:00 Free time!**
I usually connect with other international friends via SNS. I usually use this time to plan itineraries for my trips around Japan.
- 24:00 Call it a day and go to bed**
My body will be tired by this time, so I turn on the heater and head to my futon for a comfortable sleep.



Statistics of International Students in Japan

Number of international students by region of origin



Number of international students by country/region

	Country (region)	No. of students
1	China	123,485
2	Nepal	64,816
3	Vietnam	40,323
4	Myanmar	16,596
5	South Korea	14,579
6	Sri Lanka	12,269
7	Taiwan	7,655
8	Bangladesh	7,597
9	Indonesia	6,778
10	Mongolia	4,085

Number of international students by institutional type

	No. of students
Graduate school	58,215
University (undergraduate)	87,421
Junior college	3,265
College of technology	506
Professional training college	76,402
University preparatory course	3,658
Japanese-language institute	107,241
Total	336,708

Source: "JASSO Annual Survey of International Students in Japan" (as of May 1, 2024)

Using a study abroad agent

Handling your own study abroad procedures is economical and has many advantages, such as developing your decision-making skills and improving your language skills. If you are too busy or unsure about your language skills, however, using a study abroad agent is an option. Be careful, though, because some agents charge excessive fees or provide incorrect information.

Before you decide to use one, be sure to consider your options carefully.

Points to consider when choosing an agent

Point 1 Fees

- Are the fees reasonable compared to other agents?

Point 2 Experience

- Does the agent have sufficient experience in assisting students wanting to study in Japan?

Point 3 Service

- Does the agent introduce schools that match your goals for studying abroad?
- Do not use an agent that commits immoral/illegal acts, such as encouraging you to enter the country with forged documents.
- Does the agent provide satisfactory answers to your questions and updates on the progress of procedures?
- Do not let an agent pressure you into applying quickly.
- Does the agent explain not only the advantages of studying abroad but also the difficulties you may encounter?

Working a part-time job while studying in Japan

An individual with a student visa may engage in part-time work for **up to 28 hours a week** by applying for a "Permission to engage in activity other than permitted under the status of residence previously granted" at a regional immigration bureau or the like. Approximately 65 percent of privately funded international students work part-time, with an average monthly income of around 81,000 yen (US\$540). Part-time work alone is not sufficient to cover all tuition and living expenses, so be sure to draft a financial plan that does not rely on part-time work when planning to study in Japan.



Beware of study abroad agents that claim you can earn a lot of money while studying in Japan!



You can earn an hourly wage of 3,000 yen!



The average hourly wage for part-time work is around 1,300 yen.

You can earn 300,000 yen a month doing part-time work!



The average monthly income from part-time work is around 81,000 yen.

Study in Japan Website

The Study in Japan website provides the information you need to study in Japan, including how to prepare, life as a student in Japan, and scholarship information. You can also search for a school that meets your needs according to your major of choice, language used in classes, and school location. In addition to those who wish to study in Japan or wish to find a school to attend, we also recommend this website for those still not sure whether they wish to study abroad, or are still choosing which country to study in.



Study in Japan Website
<https://www.studyin-japan.go.jp/en/>



Study in Japan Fairs

These are valuable opportunities where you can speak directly with school representatives. The Study in Japan Fair is held online and in-person every year. For more information, visit the Study in Japan website.

Study in Japan
<https://www.studyin-japan.go.jp/en/events/>



Q. I have attended a Japanese school. Can I apply to the international student entrance exam?

A. Whether you can take the international student entrance exam or not is decided by the school. Those who have graduated from a Japanese high school, and those who hold both Japanese and another nationality should inquire about the entrance exam before applying to the school.

Q. Please tell me about the process of entering graduate school.



A. Check the entry requirements, create a research proposal, and confirm what documents need to be submitted. Generally, you must find an academic supervisor yourself. Some institutions require you to have informal acceptance before application, so confirm this with your chosen institution as soon as possible.

Q. How should I search for information regarding the application period, necessary documents, and entrance examination?



A. Details of the application process and entrance examination can be found on the school's website or admission guidelines. Once you have decided on a school, check their website or admission guidelines.

Q. Please tell me about the high school international exchange program and scholarship.

A. The groups below offer support for high school international exchange.

- **AFS Intercultural Programs**
 URL: <https://afs.org>
 Note: Use the "Find AFS in your Country" function to inquire at your local office.
- **YOUTH FOR UNDERSTANDING**
 URL: <http://yfu.or.jp>

We truly believe that everyone can find something worthwhile by studying in Japan.

JASSO International Offices

At each of the five JASSO international offices, you can consult with us in person or by telephone or email. We also have various reference materials regarding studying in Japan.



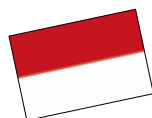
Thailand

1016/3, 10F Serm-mit Tower, 159 Asok-Montri Rd., Bangkok 10110 THAILAND
 Tel : (+66) 2-661-7057
 E-mail : info@jeic-bangkok.org
 Web : <https://www.jeic-bangkok.org/>
 Facebook : <https://www.facebook.com/JASSO.Thailand>
 Instagram : <https://www.instagram.com/jasso.thailand/>



Korea

#702 Garden Tower, 84 Yulgok-ro, Jongno-gu, Seoul 03131 REPUBLIC OF KOREA
 Tel : (+82) 2-765-0141
 E-mail : jasso@jasso.or.kr
 Web : <http://www.jasso.or.kr/>
 Facebook : <https://www.facebook.com/JASSO.Korea>
 Instagram : <https://www.instagram.com/jasso.korea/>



Indonesia

2nd Floor, Summitmas Tower II, Jalan Jenderal Sudirman Kav. 61-62, Jakarta 12190 INDONESIA
 Tel : (+62) 21-252-1912
 E-mail : info@jasso.or.id
 Web : <http://www.jasso.or.id/>
 Facebook : <https://www.facebook.com/jasso.indonesia>
 Instagram : <https://www.instagram.com/jasso.indonesia/>
 WhatsApp : <https://api.whatsapp.com/send?phone=62212521912>



Vietnam

4th Floor, CornerStone Building, 16 Phan Chu Trinh, Hoan Kiem, Hanoi, VIETNAM
 Tel : (+84) 24-3710-0226
 E-mail : info@jasso.org.vn
 Web : <http://www.jasso.org.vn/>
 Facebook : <https://www.facebook.com/JASSO.Vietnam>



Malaysia

A-7-5, Northpoint Offices, Mid Valley City, No.1, Medan Syed Putra Utara, 59200 Kuala Lumpur, MALAYSIA
 Tel : (+60) 3-2287-0812
 E-mail : enquiry@studyin-japan.org.my
 Web : <http://www.studyin-japan.org.my/>
 Facebook : <https://www.facebook.com/JASSO.KL/>

Japan Student Services Organization (JASSO) provides the following support programs for international students

- Scholarship provision
- Implementing Examination for Japanese University Admission for International Students (EJU)
- Collection and provision of information on studying abroad in Japan
- Japanese language education
- Housing support

[Edited and published by]

Independent Administrative Institution, Japan Student Services Organization (JASSO)
 Information Services Division, Student Exchange Department
 2-2-1 Aomi, Koto-ku, Tokyo 135-8630

E-mail : infoja@jasso.go.jp
 Tel : (+81) 3-5520-6111
 Web : <https://www.studyin-japan.go.jp/ja/>
 Facebook : <https://www.facebook.com/profile.php?id=100092715664950>
 Instagram : https://www.instagram.com/jasso_study_in_japan/

 Independent Administrative Institution
Japan Student Services Organization